

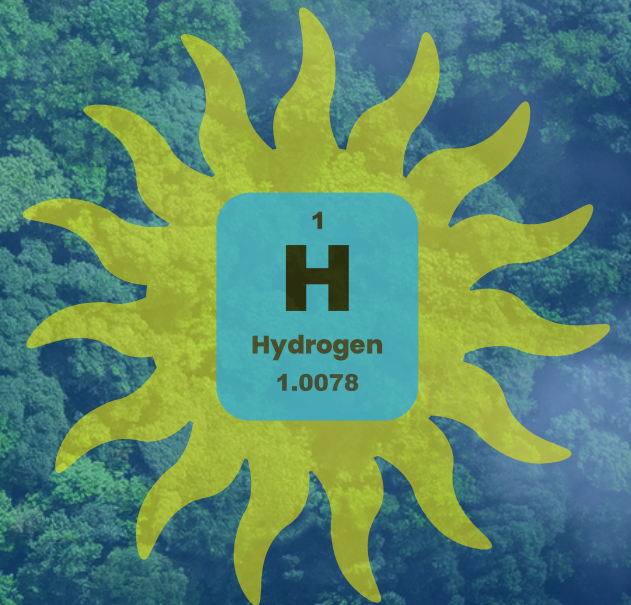


USER MANUAL

H2GEN-1800

HYDROGEN OXYGEN GENERATOR

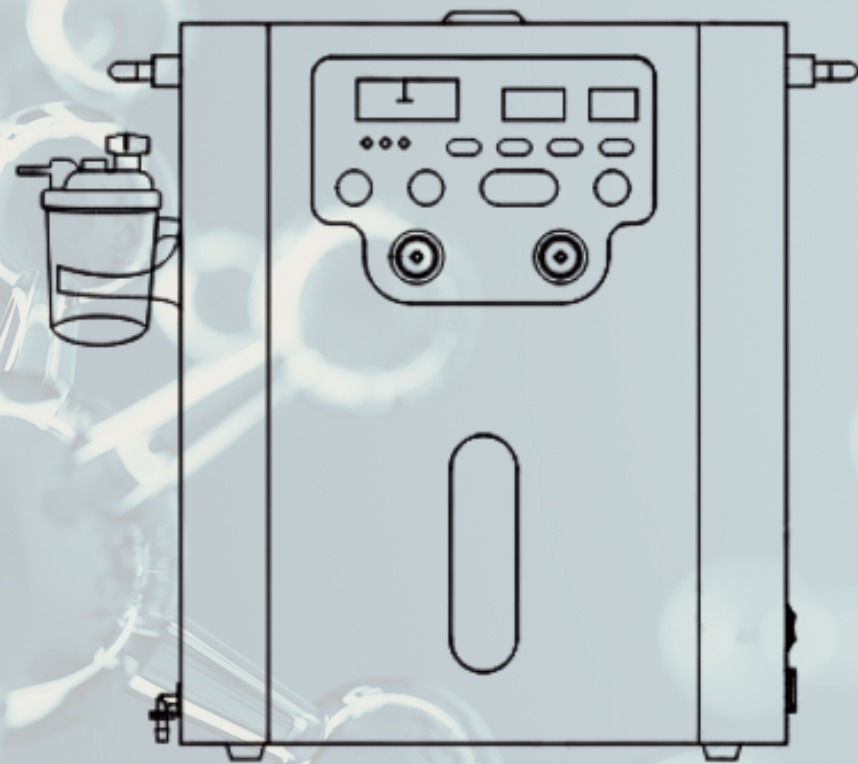
H2



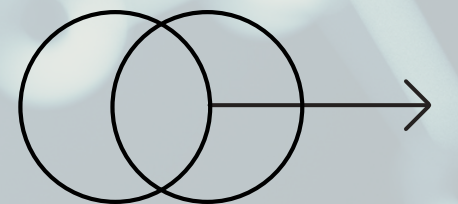
BIORÉZ

INDEX

- 03** WARRANTY AND SERVICE
- 03** CARING FOR YOUR H2GEN
- 03** TECHNICAL SPECIFICATIONS
- 04** HARDWARE
- 05** SAFETY PRECAUTIONS
- 06** HOW TO USE THE H2-GEN
- 07** INITIAL SETUP
- 08** POWER ON & ADD WATER
- 09** SET TIMER
- 10** DRAIN WATER
- 11** ADDITIONAL USER GUIDELINES
- 12** TROUBLESHOOTING AND PROTECTION CODES



INDEX



Warranty and Service

The H2GEN-1800 is supported by a 24-month warranty against defects in quality. If the unit fails to operate correctly during the warranty period, please [open a support ticket at our help desk](http://link.biorez.life/help) (<http://link.biorez.life/help>) or [email us](mailto:support@biorez.life) (support@biorez.life) to receive technical support. Contact our help desk if the device is out of warranty and requires service.

The following situations are not covered by the warranty:

- damaged or broken by contact.
- disassembled or modified.
- improper use and maintenance - not in accordance with this Manual.
- Failure caused by natural disasters and other force majeure factors (such as earthquakes, fires, lightning strikes) and other reasons.
- The warranty period has expired.
- Failure due to reasons such as improper installation, repair, modification, disassembly, incorrect input voltage, or impurities in the water tank.
- Failure due to the use of unapproved parts.
- The use of optional parts or auxiliary devices.

Contact our help desk if the device is out of warranty and requires service.

Technical Specifications

Voltage: 110/220 VAC 60/50 Hz	Flow Rates H2 -> 1200/1000/600/400
Power: 500 W Max	(ml/min): O2 -> 600/500/300/200
Dims (cm): 318x208x378	H2 Concentration: 99.996%
Weight (kg): 11	Electrolytic Mode: Anode Pure Water Electrolysis
	Water Source: Purified or Distilled (< 5 TDS)

Inspection

Please check the H2GEN-1800 unit to ensure that it has been delivered to you in perfect, brand-new condition. If you encounter any issues, please contact us immediately.

Check the Hardware (page 6) to ensure that you have received all parts and accessories.

Remove the silicone plug, as this is only used to prevent leakage of the protective water during transportation. Insert the plastic cover for permanent use.



Silicone plug



Plastic cover

Caring for your H2GEN-1800

- Must be installed according to this User Manual.
- Do not drop, hit, or mishandle. Be sure to handle with care at all times.
- Do not use in high-temperature, wet, corrosive, or radioactive environments; otherwise, this will invalidate the warranty. Don't expose the device to direct sunlight.
- Do not disassemble as this will void the warranty.
- When not in use, disconnect the power cable.

H2GEN-1800 User Manual by Huf Sirius for the BIOREZ Wellness Project, June 30, 2025.

HARDWARE

Hydrogen Generator



Shown in painted white finish

Water Bubbler



Nasal Cannula (2)



Ear Cannula



Goggles



Drain Tube



Power Cable
Type A or C



Moisture Collector



Y Connector

SAFETY PRECAUTIONS



KEEP AWAY FROM FIRE

Do not smoke or expose the generator to an open flame when in use.



DO NOT FLIP UPSIDE DOWN

Keep upright and do not invert under any circumstances. If you stop using it for an extended period, drain all the water from inside the tank. If you need to move the generator, it is best to drain the water to avoid any risk of damage.



VENTILATION

The generator should be placed in a ventilated room indoors and away from direct sunlight.

Do not place objects on the unit, especially liquids.

The room temperature should be maintained between 10°C and 30°C. Too low or too high a temperature may cause the generator to malfunction.

KEEP SPACE CLEAN

Good airflow is needed. Do not place any objects around the unit that may limit airflow, as this can cause overheating, shutdown, or a drop in hydrogen concentration. Grease or grease-like substances must not be used in any way. When in operation, do not block the flow of gases from the H₂ and O₂ outlets. Do not twist, bend, or interfere with the flow of hydrogen in the tubing and cannula.

BEFORE EACH USE

Empty any water in the cannula's water collector container.

USE DISTILLED OR DEMINERALIZED WATER ONLY

Other sources of water can damage the generator due to impurities. The user is liable for such damage and the cost to repair or replace.

UNAUTHORIZED REPAIR AND DISASSEMBLY IS PROHIBITED

Please don't open, try to repair, or disassemble the generator without permission. Otherwise, it might be prone to fire, electric shock, and other accidents.

How to Use ***H2GEN-1800***



Initial Setup

The unit may have a small amount of residual water in the tank. You may notice condensation on the water level. If the water inlet plug is wet, wipe dry any moisture around the inlet.



BEFORE PLUGGING IN

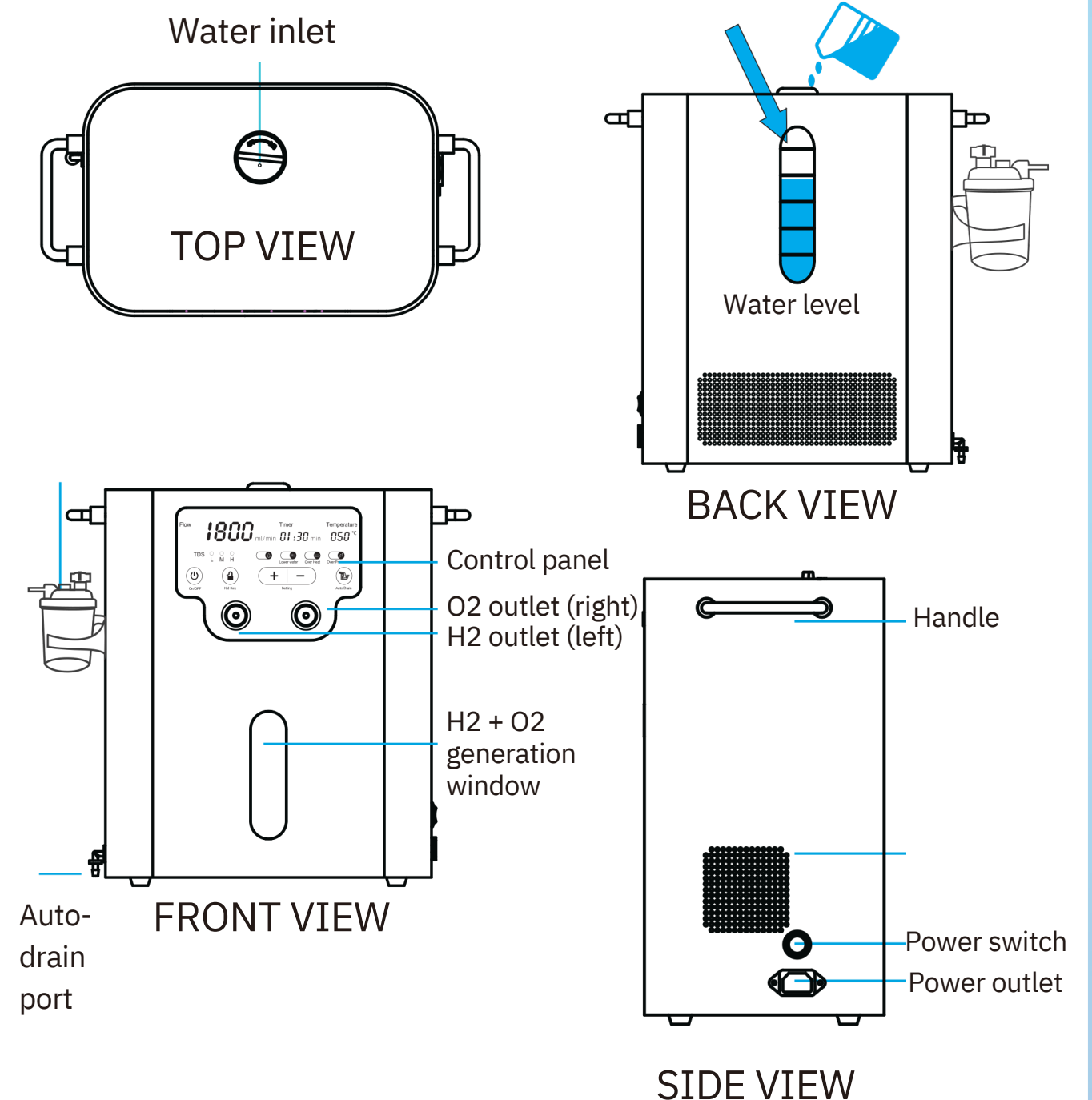
Confirm that your power supply voltage matches the specifications on the back of the generator.

Install the moisture collector on either side of the generator using the screw mount.



Add Water

Remove the temporary silicone plug from the water inlet. Using a clean funnel, pour distilled water into the tank until the water level reaches the 2000 ml mark. Please don't fill more than this, as damage to the generator can happen. After adding water, install the permanent plastic cover and turn it to the ON position.



Power On

Connect the power cable to the power outlet on the back of the unit. Plug the other end of the power cable into the power supply. Turn ON the red power button. The generator will enter standby mode.

Touch the On/Off button to turn ON the control panel.

Connect attachments

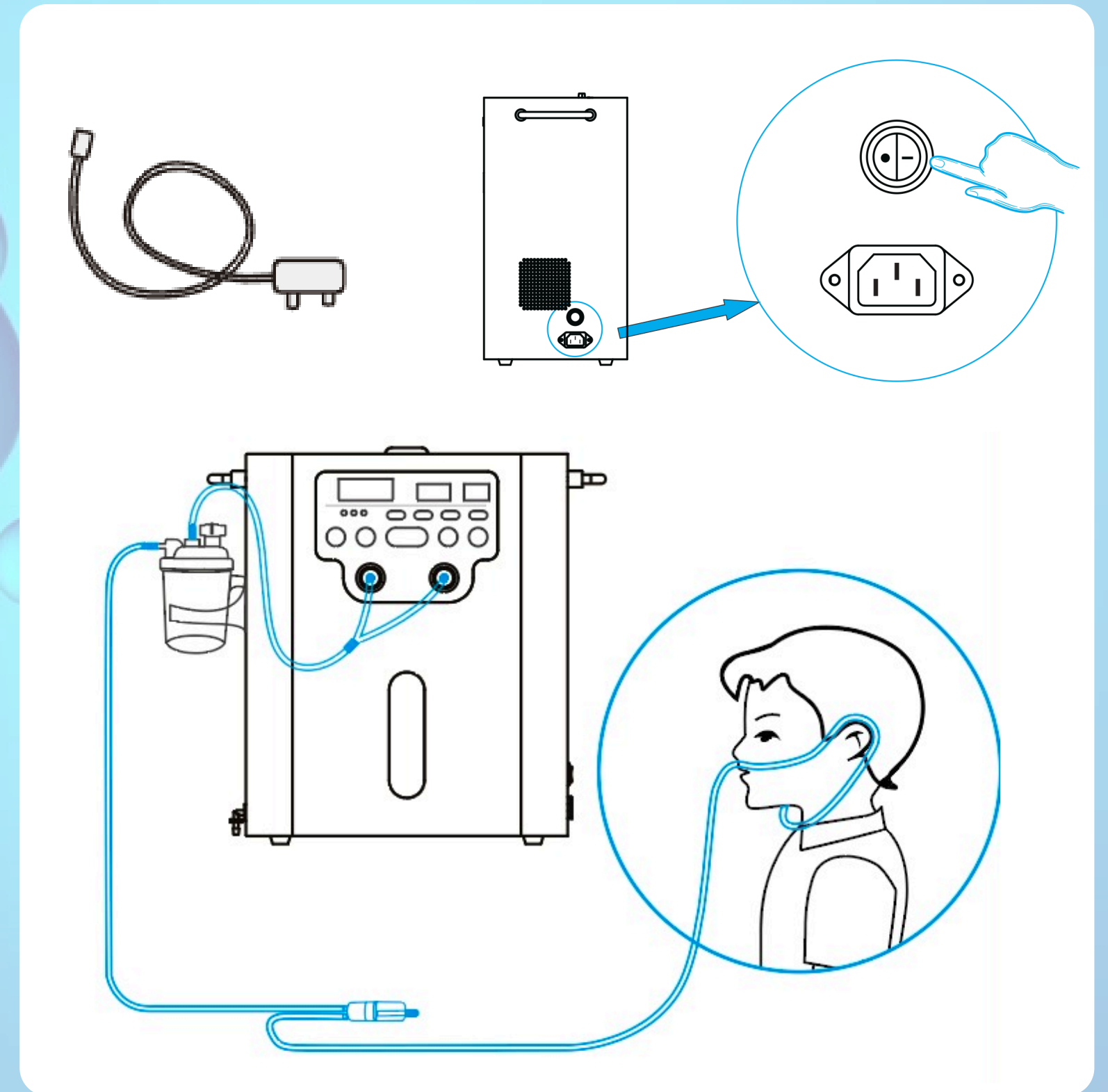
Connect the Y Connector to the O₂ and H₂ outlet ports.

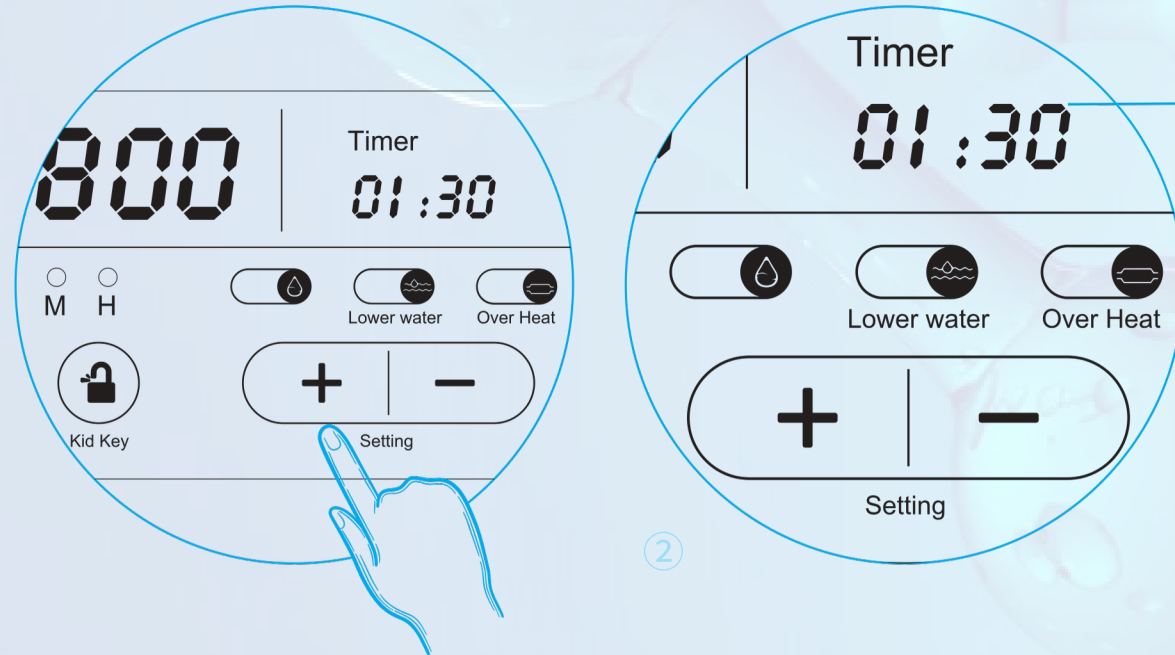
Connect the silicone tubing to the Y connector on one end and the moisture collector's inlet port on the other end.

Connect your cannula (or other attachment) to the outlet port of the moisture collector.

Set the Timer

The Settings (+/-) buttons control the duration of H₂ and O₂ generation. The timer range is 1/2 to 8 hours. Once the timer is turned on, the H₂-GEN will start generating. The timer will start to countdown.





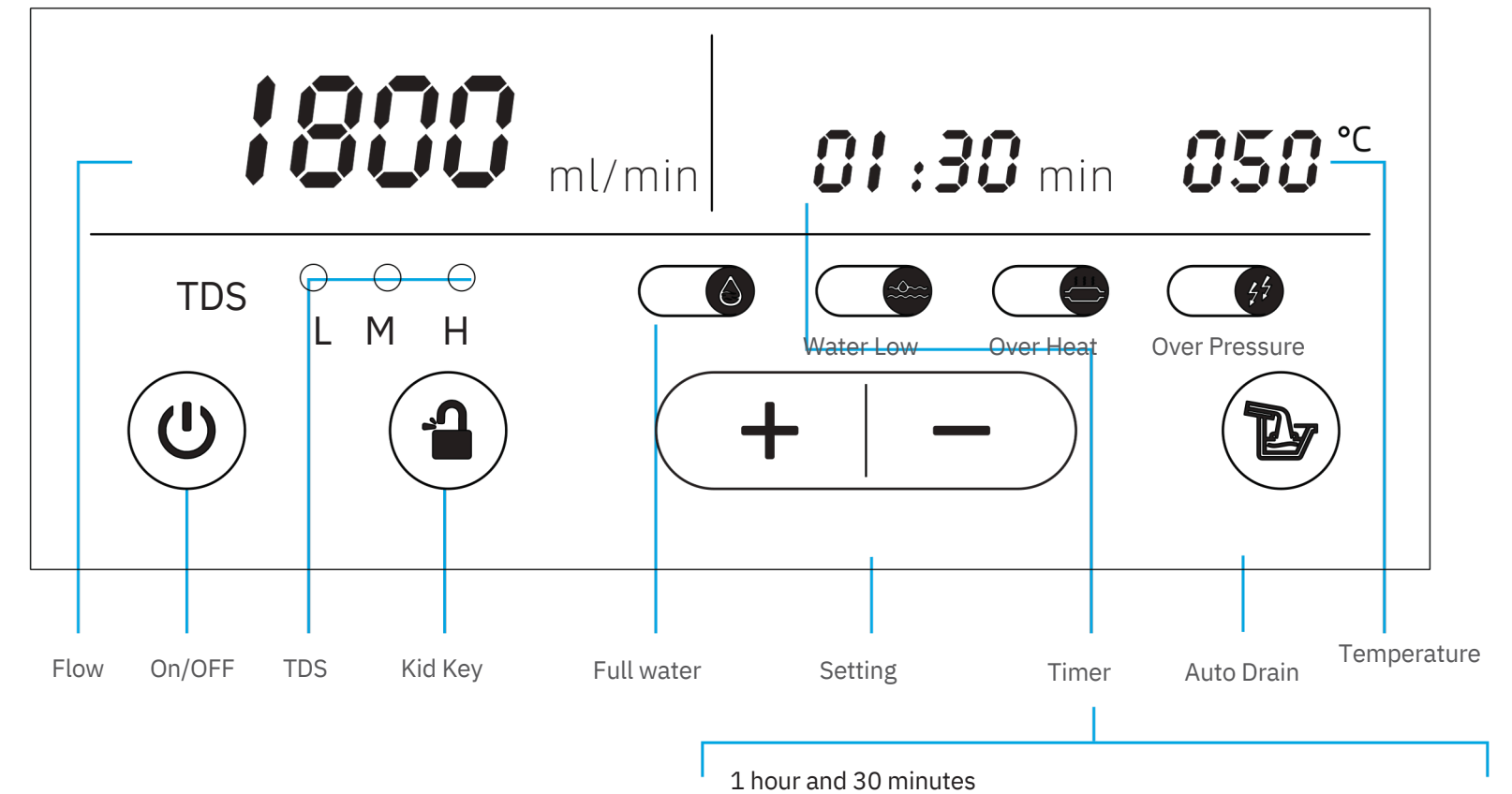
To turn off generation, touch "On/Off"

Adjusting the Flow Rate

Press the "Flow Rate" button to select a different flow rate.

Refilling Water

Refill water when the "E1" code is displayed, and the "Water Low" indicator is illuminated blue.



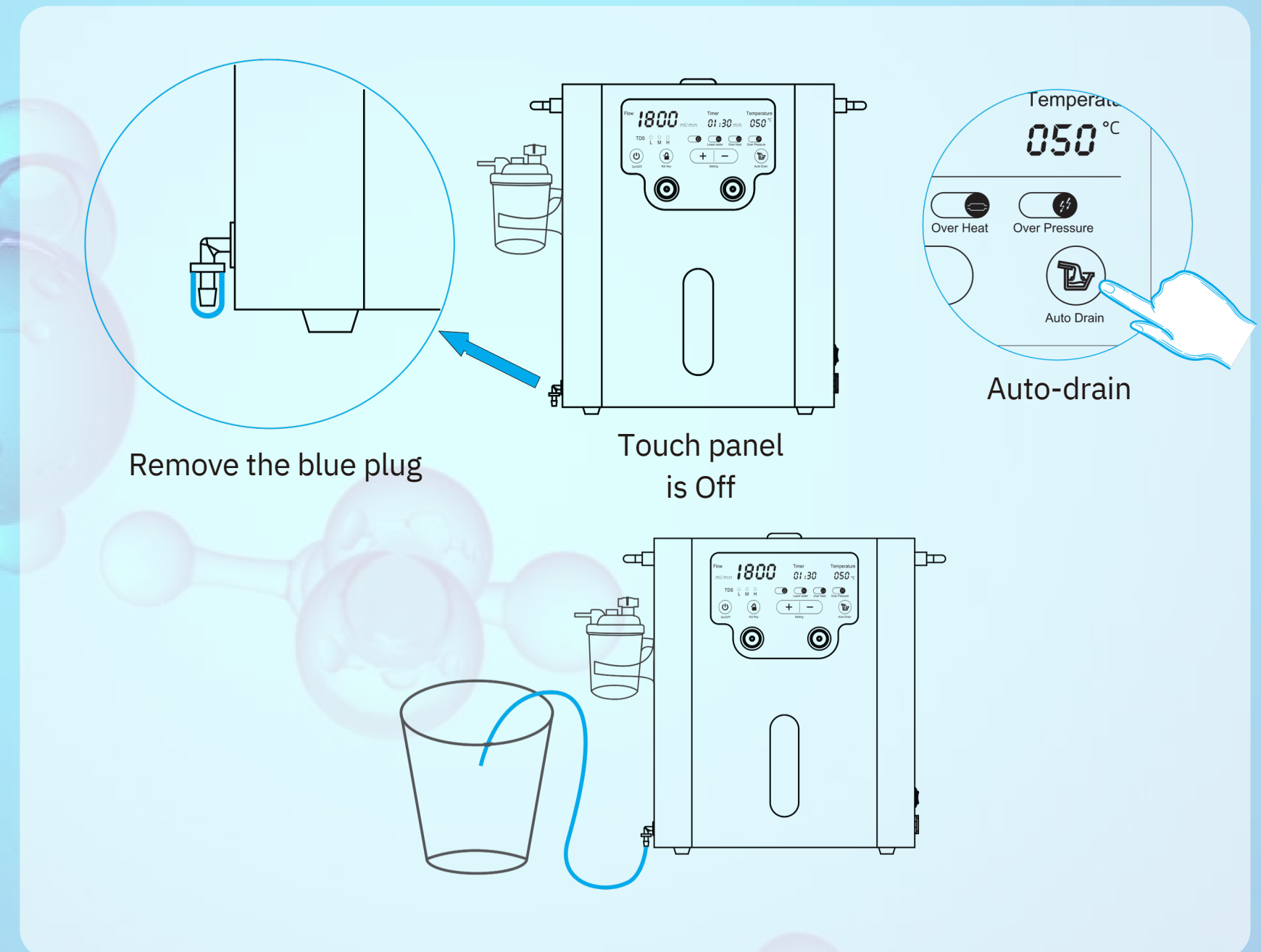
1. Turn OFF the red power button.
2. Using a clean funnel, pour distilled water into the tank until you reach the 2000 ml mark on the water level. Do not overfill.
3. Re-install the cap and turn it to the "ON" position.
4. Turn ON the red power button. The "E1" code will no longer show. Generator is ready for use.

How to drain the water

1. If the generator is in operation, press “On/Off” to turn it off. The touch panel should now be off.
2. Remove the blue plug from the drainage port and connect the drain tube.
3. Put the other end of the drain tube in an empty container to collect the water.
4. Ensure the power switch on the back is turned On.
5. Press and hold "Auto Drain" for 3 seconds to activate it.
6. After drainage is completed, reinstall the plug.
Do not keep this port open, as it can become blocked with debris and cause a protection code E6 (see page 13).

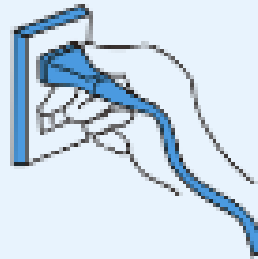
When to drain the water

- Replace the water after the first week of use.
- If the water quality (TDS) fails to meet the standard during refilling, the panel will show "L". If this occurs, drain the water and refill with a different source of distilled/demineralized water.
- when transporting the generator.



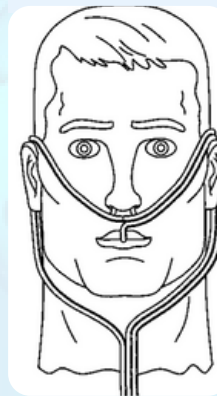
Additional Use Guidelines

If the unit will not be used for more than a week, switch off the red power button and disconnect the power cable from the electrical supply and the power outlet.



NASAL CANNULA USE

- Proper use is shown here
- Do not share cannulas
- Disinfect after use*
- Replace cannula as needed



GOGGLE USE

- Disconnect the ear tips from the ear cannula and connect these tubes to the connectors on the bottom of the goggles.



- Disinfect after use*

* 3% H₂O₂ or boil in water

Install the Y connector onto both the H₂ and O₂ inlets prior to nasal, ear and eye use.

HYDROGEN-RICH WATER: Use the main tubing from the ear cannula to connect the bubbler to the H₂ outlet (left) ONLY. Bubble up to 1 L of water for 5-10 minutes. Drink immediately as H₂ dissipates from water quickly. Use a tapered bottle and keep the water cool to retain more hydrogen for longer.



Timely heat dissipation: Turn off the generator for a minimum of 1 hour for every 8 hours of use.

Suitable for everyone: Children and adolescents who are seriously ill and unable to take care of themselves should be supervised.

Crackling sound during operation: Static electricity is formed by friction or by the redistribution of charges caused by the mutual attraction of electrical loads. During use, static electricity produces a crackling sound, which is a normal phenomenon.

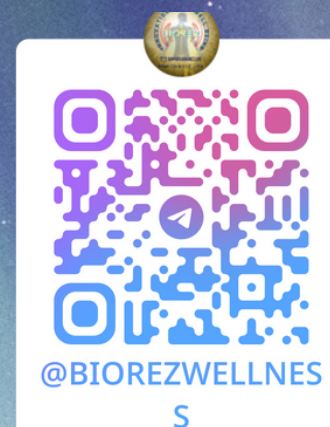
SAFE USE: If you feel uncomfortable during use, stop immediately.

Trouble-Shooting & Protection Codes

Protection code	Issue	Remedy
E1	Low Water Level Detected	The sensor will shut off the generator when E1 is tripped, protecting the unit from damage. The blue light indicator for “Lower water” will be turned on. Follow the procedure to “ Add Water ”.
E2	Overheating detected	When the internal temperature of the generator exceeds 65°C, the sensor will alarm and stop H2 generation. Turn off the red button and wait approximately 30 minutes to allow the generator time to cool down.
E3	Low Quality Water Detected	The TDS indicator will be illuminated. Auto-drain the water. Flush the tank by filling and draining three times before refilling. Turn off the red button for 5 seconds and turn it back on to re-initialize the sensor; otherwise, the code may not clear.
E4	The water tank is overfull	The error will occur if the water level is above 2L. It will disappear after 3 seconds, and the generator can be started; however, it is best to drain the water down to 2L.
E5	Low water temperature	Auto-drain the water and add warmer water.
E6	Auto-drain port blocked	Remove drain plug or other cause of obstruction.

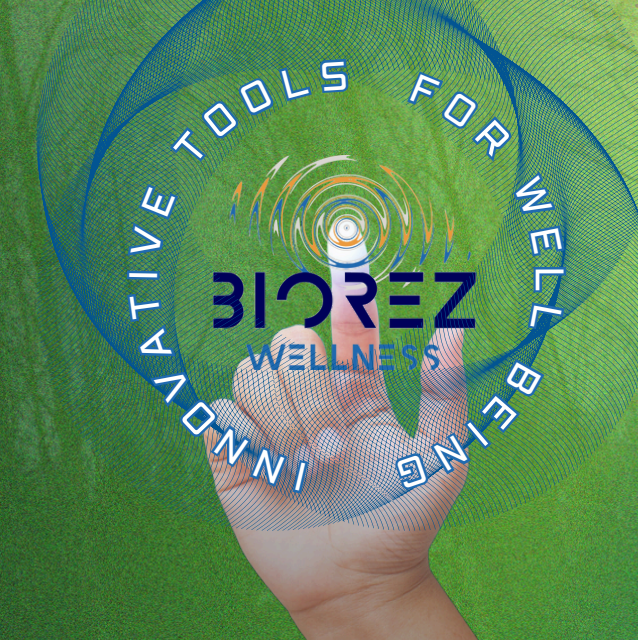
Join our Telegram Channel for
Health News, Articles, Videos,
Research and much more

FEED WELLNESS



KNOWLEDGE BASE: KB.BIOREZ.LIFE

HELP DESK: SUPPORT@BIOREZ.LIFE



Huf Sirius

 nanosacred

 huf@biorez.life

 WWW.BIOREZ.LIFE

 link.biorez.life/tree

Enjoy the Bioresonant Life!