



# RIFETECH®

## Plasma



	PLESNI
	Aspergillus niger
	Candida albicans
	Candida glabrata
	Candida haemulonii
	Candida insectumens
	Candida parapsilosis
	Candida pinicola
	Candida sinolaborantium
	Candida terreborum
	Candida tropicalis

# RIFETECH

Rifetech Ltd. presents technology developed with the support of European grant funds in the field of innovation under the auspices of the Ministry of Industry and Trade.

Expert team, under the leadership of doc. Ing. Vladimír Holcman, Ph.D., Ing. Robert Macků, Ph.D., Ing. Tomáš Trčka, Ph.D. from the Institute of Physics, in cooperation with biologist RNDr. Dagmar Jančová, Ph.D. aimed to develop a new methodology, which reflects rapidly changing trends in technology and health.

The result of successfully performed simulations, calculations and modulations of plasma discharge is a device with a highly stable and accurate therapeutic signal, that is designated for experimental research of the effect of electromagnetic waves on human health.



EUROPEAN UNION  
European Regional Development Fund  
Operational Programme Enterprise  
and Innovations for Competitiveness



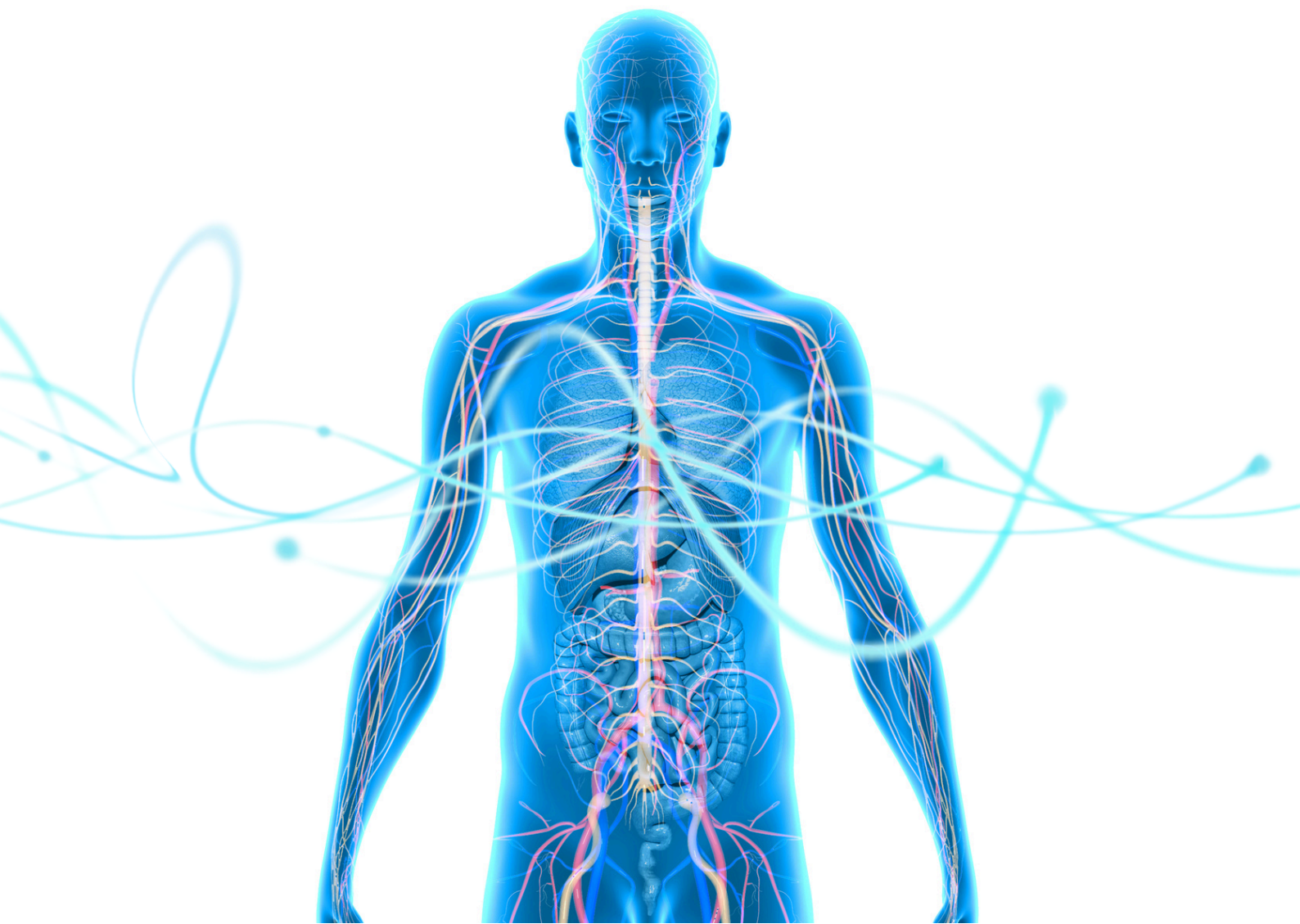
MINISTRY OF  
INDUSTRY AND TRADE



R I F E T E C H®

RIFETECH Plasma has the unique ability to elicit a biological response of the organism with a therapeutic effect through an accurate and stable signal. RIFETECH Plasma achieves this by an innovative combination of specific plasma properties and EM field with original frequency protocols acting not only on the whole genomes of pathogenic microorganisms.

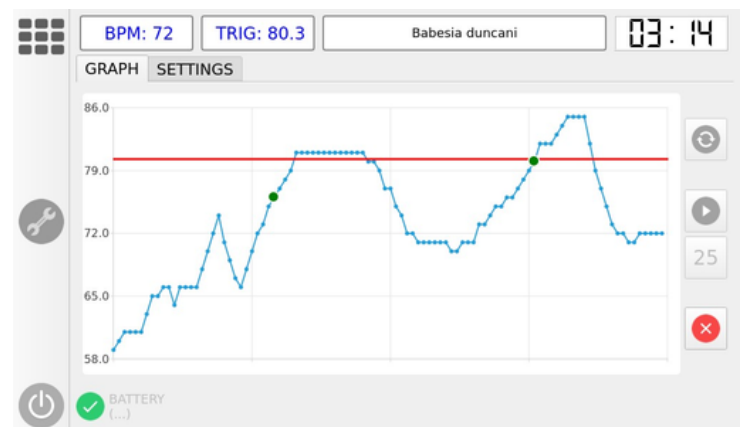
As a result, Rifetech Ltd. is becoming a worldwide leader of emerging discipline of bio-electromagnetic therapy.



## RIFETECH Plasma functions are clearly divided into 11 complexes:

VIRUSES  
BACTERIA  
PARASITES  
MITES  
MOLD

DISEASES  
STABILIZATION COMPLEXES  
IMMUNE SYSTEM  
REVITALIZATION  
HARMONIZATION  
BIOFEEDBACK





High accuracy and stability of the therapeutic signal



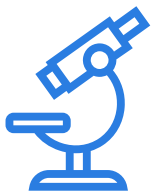
Original frequency protocols affecting whole genomes of pathogenic microorganisms incl. Covid-19



Inovative technologies with almost unlimited therapeutic potential on the experimental level



Compact standalone hardware and intuitive software



Regular updates and background of the professional team